

AERIAL FTTH DISTRIBUTION NETWORK

AERIAL DISTRIBUTION BOX WITH ADAPTERS & SPLITTER

PRODUCT + BENEFITS

- + **Distri-Protect®: Dedicated and protected area for distribution fibers**
- + **E@sy'Secure®: Guaranteed to keep distribution and subscriber cables in place over time, short installation time**
- + **Cabled product IP55 rated**
- + **Connection without splices**



PRESENTATION

The aerial box allows the connection between the subscriber cables and the distribution cable on a FTTH network. It is intended to be installed on a pole or on a facade.

Using adapters & pigtails in the distribution box allows a faster and more secure connection. Indeed, field tests have shown that a pre-terminated connection of a subscriber divides by 3 the risk of damaging a neighbor connection, compared to a connection made by splicing.



Distri-Protect®: the distribution cable fibers allocated to customers are spliced to pigtails when installing the box. The connection area of the distribution cable to the pigtails is then closed by an inner cover to protect the wiring.



The Omelcom aerial distribution box is also equipped with the E@sy'Secure® anchoring system, a simple way to hold the cables securely in place, as required by the EN 61300-2-4 standard, with an installation time of only 45 seconds per cable

AERIAL FTTH DISTRIBUTION NETWORK

AERIAL DISTRIBUTION BOX WITH ADAPTERS & SPLITTER

TECHNICAL BENEFITS

Distri-Protect® protects the distribution cables during the hookup phase, and make it possible to mix by-pass and hookup splices in the same box

- Reduces the total amount of boxes needed by 10%
- Saves the matching installation costs
- Reduces maintenance costs because it limits the risk of fiber breakage during the hookup phase

E@sy'Secure® guarantees a secure hold of the distribution cables

- Divides by 10 the anchor installation time, multiplies by 4 the anchoring performance
- Less maintenance over time



MAIN CHARACTERISTICS

Caractéristiques	Performances	Norme de référence
E@sy'Secure® anchoring system	Tensile load: > 80 D for HDPE sheaths / 10 D for LSZH sheaths (For example, tensile load > 1200 N for a ø15 mm cable) Cable anchoring torsion strength: ± 90°	EN 61300-2-4 EN 61300-2-5
IP – IK	IP55 IK08	EN 60529 EN 61300-2-12
Box closing	Triangle key closure + 2 toggles	-
Material	PP loaded fiberglass, Gray RAL7035 UV resistant	ISO 4892-2 ISO 11664-4
Fixing	By screw on facade (3 screws) / By screw on omega bracket / By strapping directly on pole	-
Compatible fiber type	Monomode G657A1 et G657A2	IEC 60793-2-50
Splice protectors	Heat-shrink splice protectors ø2.3 to 2.6 mm ; 40 to 60 mm	-
Type of coupler (only for the 3,4L box)	2 bare-preconnectorised coupler housings 60x7x4 mm or 1 bare-preconnectorised coupler housing 60x12x4 mm	
Adapter type	Adapter SC/APC simplex with translucent caps, IL ≤ 0,15 dB Adapter LC/UPC duplex with caps, IL ≤ 0,15 dB	IEC 61300-3-4 methode B
Pigtail type	12 colours pigtails, grade B1	IEC 61300-3-34 IEC61300-3-6

Always aiming to satisfy its customers and to upgrade its products' performances, OMELCOM may modify the described technical specifications without previous notice.

AERIAL DISTRIBUTION BOX WITH ADAPTERS & SPLITTER

USE CHARACTERISTICS



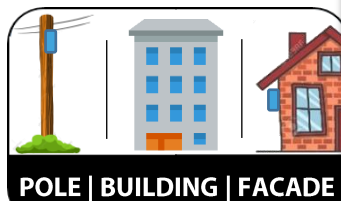
Dimensions 313 x 192 x 67 mm (Vol. 2,2 Litres)



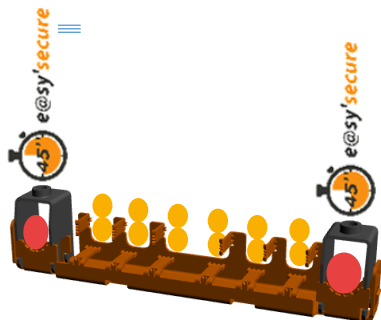
14 Inputs / outputs maximum



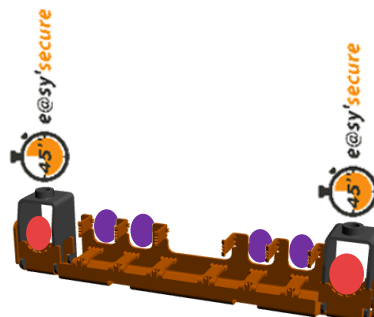
Storage capacity up to 12 splices + 6 SC adapters



Uses of the input/output ports



- Cables $6 \leq \varnothing \leq 13$ mm
- Cables $6 \leq \varnothing \leq 9$ mm
- Cables $3,8 \leq \varnothing \leq 6,2$ mm

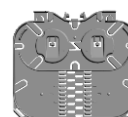


NB : These diagrams show two different ways of using the same anchor bar. As such, the bar can also be used to make a mix of \varnothing 3.8-6.2 mm cables and \varnothing 6-9 mm cables.

DELIVERY INFORMATIONS

Part Number	Part name
CO010	BOX PRECONNECTED IP55 DISTRI-PROTECT® 6 SCAPC + 6 PIGTAILS <i>Delivered with 1 tray 12OF + 1 span tray to coil up micromodules</i>
CO014	BOX IP55 DISTRI-PROTECT® 6 LCUPC duplex <i>Delivered with 1 tray 12OF + 1 span tray to coil up micromodules</i>
CO016	BOX IP55 DISTRI-PROTECT® PRECO 6 LCUPC duplex + 12 PIGTAILS <i>Delivered with 1 tray 12OF + 1 span tray to coil up micromodules</i>

Span tray for coiling
up the micromodules



Splicing tray 12 OF

Always aiming to satisfy its customers and to upgrade its products' performances, OMELCOM may modify the described technical specifications without previous notice.

DISTRIBUTION FTTx

AERIAL DISTRIBUTION BOX WITH ADAPTERS & SPLITTER

USE CHARACTERISTICS



Dimensions 346 x 232 x 77 mm (Vol. 3,4 Litres)



16 inputs / outputs max



Storage capacity up to 48 splices + 16 SC adapters + 2 bare preconnectorised adapters



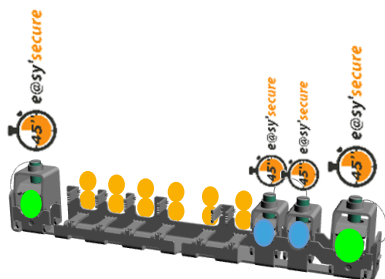
IP55 | IK08



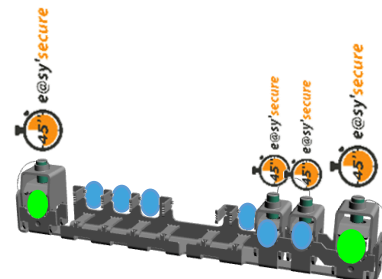
POTEAU | IMMEUBLE | FACADE



Uses of the input/output ports



- Cables $6 \leq \varnothing \leq 15$ mm
- Cables $6 \leq \varnothing \leq 10$ mm
- Cables $3,8 \leq \varnothing \leq 6,2$ mm

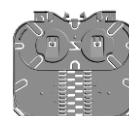


NB : These diagrams show two different ways of using the same anchor bar. As such, the bar can also be used to make a mix of \varnothing 3,8-6,2 mm cables and \varnothing 6-10 mm cables.

INFORMATIONS DE LIVRAISON

Part Number	Part name
CO011	BOX IP55 DISTRI-PROTECT® PRECO 6 SCAPC + 6 PIGTAILS Delivered with 4 trays 12OF + 1 span tray to coil up micromodules
CO040	BOX IP55 DISTRI-PROTECT® 8 SCAPC Delivered with 4 trays 12OF + 1 span tray to coil up micromodules
CO041	BOX IP55 DISTRI-PROTECT® PRECO 8 SCAPC + COUPLER 1:8 Delivered with 4 trays 12OF + 1 span tray to coil up micromodules
CO017	BOX IP55 DISTRI-PROTECT® PRECO 12 SCAPC + 12 PIGTAILS Delivered with 4 trays 12OF + 1 span tray to coil up micromodules
CO018	BOX IP55 DISTRI-PROTECT® 12 LCUPC duplex Delivered with 4 trays 12OF + 1 span tray to coil up micromodules
CO019	BOX IP55 DISTRI-PROTECT® PRECO 12 LCUPC duplex + 24 PIGTAILS Delivered with 4 trays 12OF + 1 span tray to coil up micromodules

Span tray for coiling up the micromodules



Splicing tray 12 OF

Dans le souci de mieux servir ses clients et d'améliorer les performances de ses produits, OMELCOM se réserve la possibilité de modifier les présentes caractéristiques sans notification préalable

DISTRIBUTION FTTx

AERIAL DISTRIBUTION BOX WITH ADAPTERS & SPLITTER

USE CHARACTERISTICS



Dimensions 346 x 232 x 77 mm (Vol. 3,4 Litres)



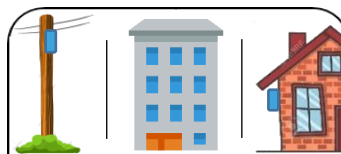
18 inputs / outputs max



Storage capacity up to 48 splices + 16 SC adapters + 2 bare preconnectorised adapters



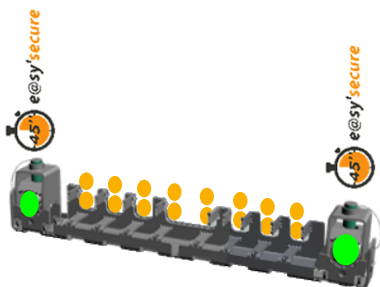
IP55 | IK08



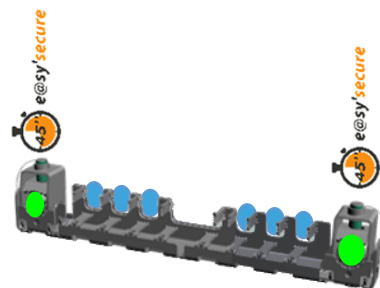
POLE | BUILDING | FACADE



Uses of the input/output ports



- Cables $6 \leq \varnothing \leq 15$ mm
- Cables $6 \leq \varnothing \leq 10$ mm
- Cables $3,8 \leq \varnothing \leq 6,2$ mm

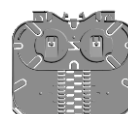


NB : These diagrams show two different ways of using the same anchor bar. As such, the bar can also be used to make a mix of \varnothing 3,8-6,2 mm cables and \varnothing 6-10 mm cables.

INFORMATIONS DE LIVRAISON

Part number	Part name
CO042	BOX IP55 DISTRI-PROTECT® 16 SCAPC Delivered with 4 trays 12OF + 1 span tray to coil up micromodules
CO043	BOX IP55 DISTRI-PROTECT® PRECO 16 SCAPC + COUPLER 1:16 Delivered with 4 trays 12OF + 1 span tray to coil up micromodules

Span tray for coiling
up the micromodules



Splicing tray 12 OF

Dans le soucis de mieux servir ses clients et d'améliorer les performances de ses produits, OMELCOM se réserve la possibilité de modifier les présentes caractéristiques sans notification préalable